



December 16, 2021

Company name: WORLD HOLDINGS CO., LTD.  
Representative: Eikichi Iida, Chairman and President  
Listing: Tokyo Stock Exchange, First Section  
Stock code: 2429  
Contact: Toshihiko Kanno, Director, Manager of  
PR/IR Dept.  
Tel: +81-3-3433-6005

## **Establishment of a Business Alliance by DOT WORLD and Kochi University**

DOT World Co., Ltd. (Head office: Minato-ku, Tokyo; President: Tetsuya Orito), a consolidated subsidiary of World Holdings Co., Ltd., has signed a business alliance agreement with Kochi University (Kochi-shi, Kochi; President: Katsutoshi Sakurai). DOT World and Kochi University, which is a national university, will cooperate primarily for activities involving the Kochi Medical School Hospital (Nankoku-shi, Kochi; Hospital Director: Taro Shuin, hereinafter, “Kochi University Hospital”).

### **Summary of the Alliance**

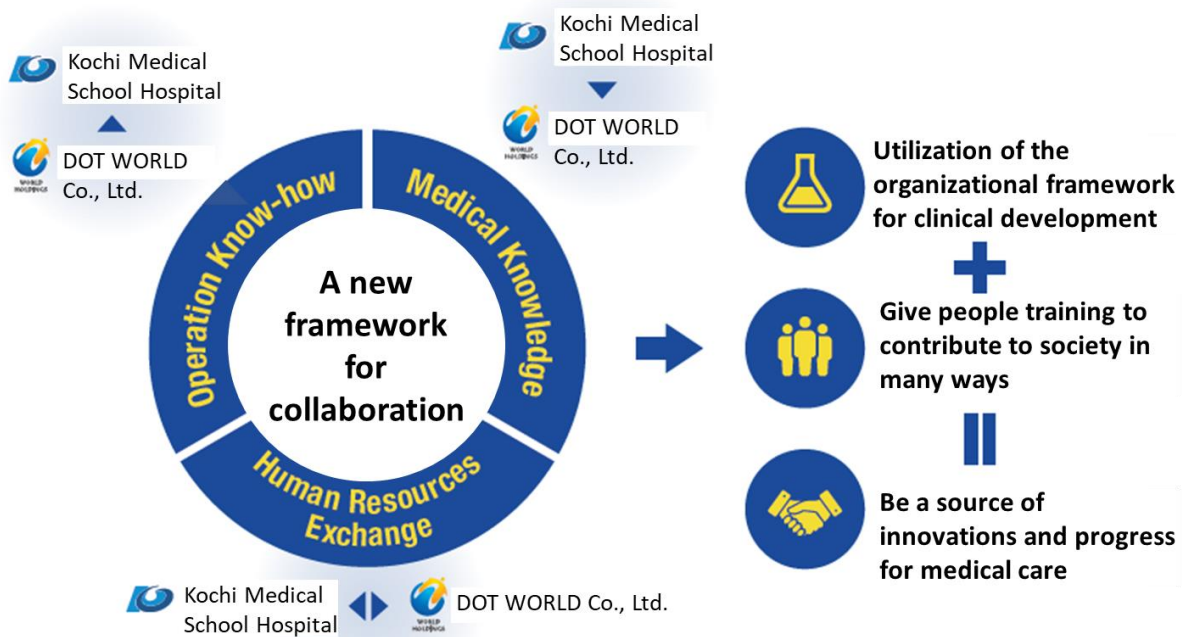
Kochi University Hospital opened in 1981 following the 1976 establishment of the university’s medical school, which was created with a dedication to the spirit of “revere heaven, love people.” Operations of the hospital are based on the philosophy of “providing advanced medical care, training skilled healthcare professionals, contributing to progress and innovation for medical care.” Everyone at the hospital is dedicated to playing a central role in healthcare in the Kochi region as a source of safe and advanced medical technologies and care. As a teaching hospital, another important goal is giving people the training needed to become next-generation healthcare professionals. All activities of the hospital are closely tied to the Kochi region.

DOT World is a contract research organization (CRO) that was established in 2006. The company’s goal is to use clinical development programs to contribute to society. Based on this philosophy, DOT World has grown consistently through a commitment to its vision of being a source of end-to-end support for clinical development programs. As a small CRO, the company has the flexibility and speed to provide fully integrated support services for these programs. Most of the company’s clients are universities and start-up companies in Japan and other countries.

Kochi University Hospital has many years of experience involving research in highly advanced and specialized fields in order to contribute to the progress of medical care. DOT World has been providing assistance to universities and other academic institutions for many years. Establishing this highly unusual alliance between a national university hospital and a CRO is expected to lead to innovations in the healthcare field. In addition, the organizational framework for clinical development activities by this hospital and DOT World will be used to combine their human resources and knowledge to contribute to society by training next-generation healthcare professionals and seeking more innovations for medical care.

Kochi University Hospital and DOT World have a strong commitment to contributing to medical care progress. Both alliance partners plan to combine their strengths for the creation of new forms of value for society.

Alliance partner strengths and collaboration



Profiles of the alliance partners

■ Kochi University

Name	Kochi University
Location	2-5-1 Akebonocho, Kochi-shi, Kochi
Established	May 1949
Representative	Katsutoshi Sakurai, President



■ DOT World

Name	DOT WORLD Co., Ltd.
Location	4F NBF COMODIO Shiodome, 2-14-1 Higashi-Shinbashi, Minato-ku, Tokyo
Established	November 2006
Representative	Tetsuya Orito, President



DOT WORLD Co., Ltd.